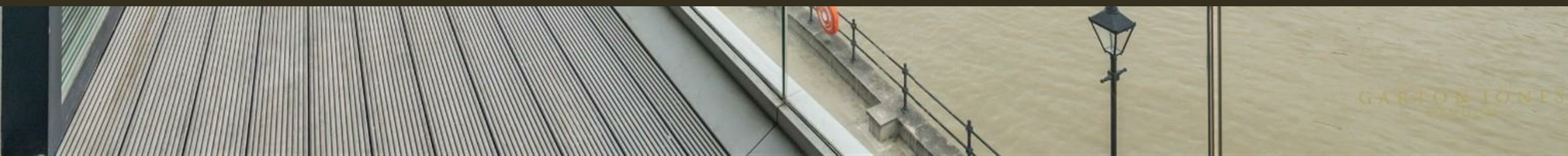




Riverwalk, Central Avenue  
Fulham SW6

GARTON JONES.COM



GARTON JONES  
LONDON

# Riverwalk, Central Avenue Fulham, SW6

## £1,153 Per Week

GARTON JONES.COM

11 Park Street  
Chelsea Creek  
London  
SW6 2FS

Sales +44 (0) 20 7824 7090  
paul@gartonjones.com  
www.gartonjones.com

### Exceptional Two-Bedroom Duplex Apartment with River Views

This remarkable two-bedroom duplex apartment, offering approximately 1,217sqft (113 sqm) of exquisitely refurbished living space, stands apart from typical flats by its exceptional design and layout. Thoughtfully configured over two levels, this home delivers the privacy and spaciousness akin to a traditional house, enhanced by its own private entrance. The interior has been meticulously renovated to the highest standards, combining modern luxury with timeless elegance. Flooded with natural light and designed to maximize its stunning uninterrupted panoramic views over the River Thames, this property provides a rare and tranquil riverside sanctuary in the heart of Fulham Riverside. The seamless flow between indoor and outdoor spaces, including multiple balconies and a private patio, creates an exceptional environment for both sophisticated entertaining and relaxed everyday living.

#### Development and Location:

- Fulham Riverside is an exclusive riverside development encompassing approximately eight acres of beautifully maintained private gardens and communal grounds. Residents enjoy a peaceful and secure environment with convenient access to central London.

#### Transport Links:

-Parsons Green Underground Station (District Line) — approximately 0.6 miles

Imperial Wharf Overground Station — approximately 0.6 miles

#### Local Amenities:

- The location is enriched by an excellent selection of supermarkets, boutique shops, popular bars, and renowned restaurants. The vibrant lifestyle of King's Road and the elegant surroundings of Sloane Square are within easy reach, offering diverse shopping, dining, and cultural experiences.

**\*\*Please note that the furniture may differ to that shown in the current photos\*\***

Available from the 7th September 2024

12 Month Contract

5 weeks security deposit

Council Tax London Borough Of Hammersmith & Fulham — Band G  
EP

- Stunning Two Bedroom Duplex Apartment
- Meticulously refurbished to the highest standard throughout
- Own Entrance
- Uninterrupted River Views
- Furnished With High Quality Furniture
- Modern Riverside Development
- 24 Hour Concierge
- Residents Gym
- 0.6m to Parsons Green Tube & Imperial Wharf Overground Station



EPC certificate available on request.

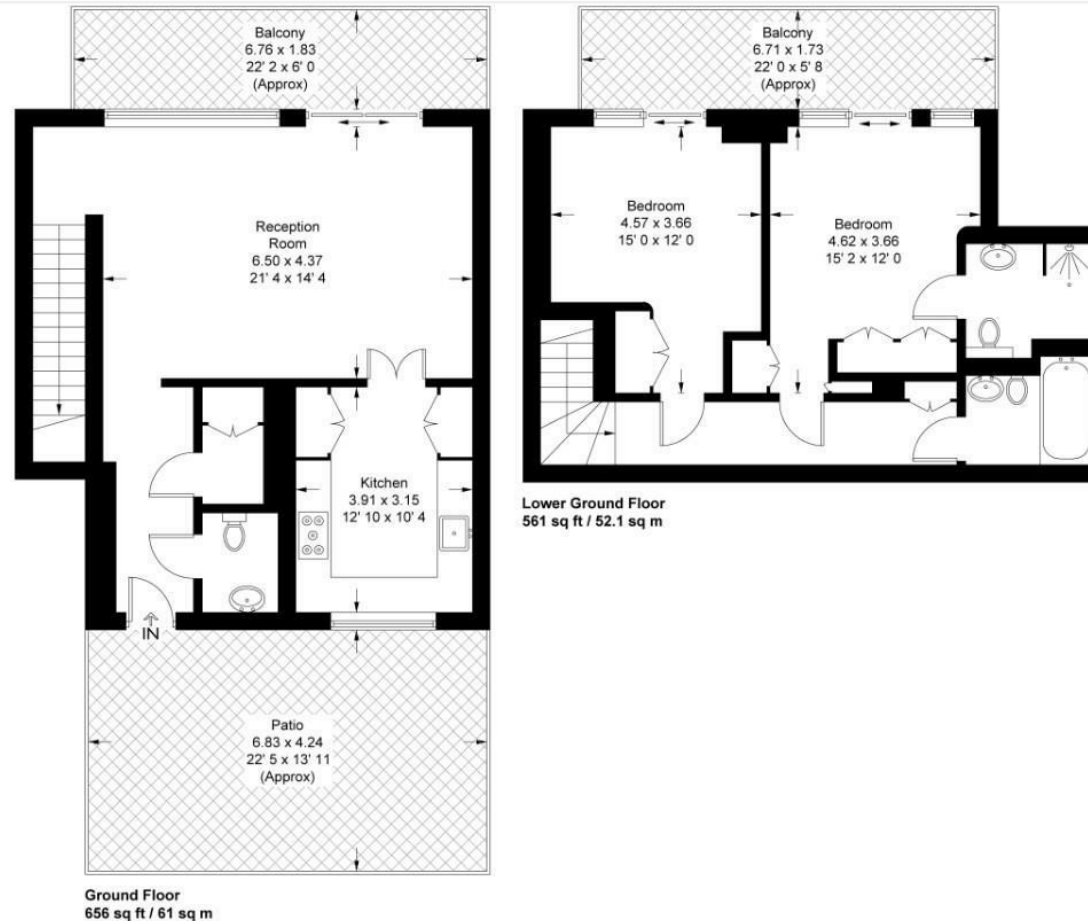
## Riverwalk

Approximate Gross Internal Area = 1217 sq ft / 113.1 sq m

Patio = 312 sq ft / 29 sq m

Balcony = 258 sq ft / 24 sq m

GARTON JONES  
LONDON



This plan is not to scale and must be used as layout guidance only. All measurements and areas are approximate and should not be relied upon to provide accurate information. This plan must not be relied upon when making property valuations, design considerations or any other such relevant decisions. We accept no responsibility or liability (whether in contract, tort or otherwise) in relation to any loss whatsoever arising from or in connection with any use of this plan or the adequacy, accuracy or completeness of it or any information within it.





